

# Moorview Referrals

SMALL ANIMAL REFERRAL SERVICES



Moorview  
REFERRALS

# Welcome to Moorview Referrals

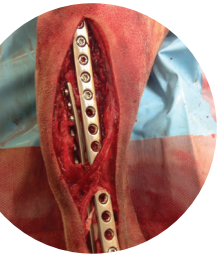
At Moorview Referrals our dedicated and friendly team take great pride in providing the best possible care for your clients and their pets.

With state of the art medical technology, hospitalisation facilities and a 24/7 emergency service, you can rest assured that your patient is receiving the best possible care, day or night. From internal medicine to complex surgical procedures, we have the knowledge and the expertise to provide advanced veterinary services in the North East of England. We are based in Cramlington, Newcastle Upon Tyne, close to the A19.



# Our referral services

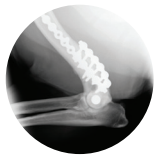
We offer a multi disciplinary service which includes:



## Orthopaedics

We welcome referrals in all areas of orthopaedics, examples of cases seen:

- Joint surgery - including cruciate surgery (tibial tuberosity advancement) and luxating patellas.
- Fracture surgery
- Angular limb deformity
- Hip and elbow dysplasia
- Hip replacement
- Arthroscopy ("Key hole" surgery for joints)
- Spinal Surgery



## Soft tissue surgery

Referrals are welcomed in all areas of soft tissue surgery, examples of cases seen:

- Brachycephalic Obstructive Airway Syndrome
- Ear disease
- Thoracic Surgery
- Gastrointestinal
- Biliary
- Hepatic
- Urogenital
- Colorectal Surgery
- Wound reconstruction
- Tumour resection
- Laparoscopy ("Key hole" surgery)

## Internal medicine

Referrals are welcomed in all areas of soft tissue surgery, examples of cases seen:

- Polydipsia/polyuria
- Vomiting/regurgitation
- Diarrhoea
- Weight loss
- Respiratory disease
- Endocrine
- Tumour staging
- Noninvasive biopsy techniques
- Dysuria/haematuria, kidney disease
- Bleeding disorders



## Oncology

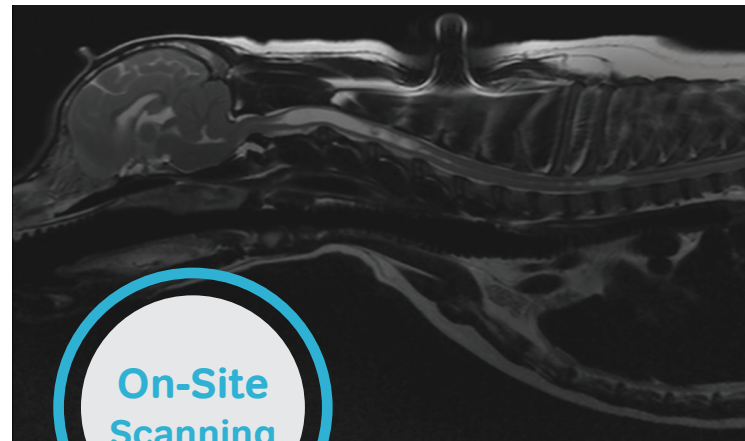
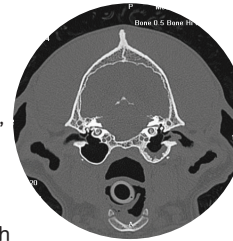
At Moorview we aim to combine the latest therapies from surgery and medicine to treat pets affected by cancer.

## Diagnostic Imaging

We use digital xrays, dental xrays, ultrasound, endoscopy, fluoroscopy, as well as:

CT (16 Slice Toshiba scanner) which is excellent for investigating problem areas such as:

- Nasal and airway disease
- Abdomen (Masses, Ectopic ureters, Portosystemic shunts)
- Oncology (Diagnosing and staging)
- Middle ear disease
- Joints
- Complex fractures
- Lumbosacral disease
- Suspected foreign body



## On-Site Scanning

Our experienced visiting neurology specialist can handle referral cases in the following areas:

- Brain diseases (tumours, cranial nerve disorders, meningitis) and investigation of seizures.
- Spinal disease (Intervertebral disc degeneration, Ischaemic myelopathy, aka: Fibrocartilagenous embolism, neoplasia)
- Middle/Inner ear disease
- Congenital conditions such as syringohydromyelia in Cavalier King Charles spaniels and hydrocephalus in small breed dogs.



## Cardiology

Our experienced referral veterinarians can handle referral cases in the following areas:

- Congenital Heart Disease
- Acquired Heart Disease
- Pericardial Effusions
- Dyspnoea and Respiratory Distress
- Murmurs (significant and localised)
- Arrhythmias



## Dermatology

We can diagnose and treat a vast range of skin, hair, ear and nail diseases using our cutting edge facilities and knowledge.

- Pruritus
- Ectoparasites (mites, fleas, lice)
- Pyoderma
- Alopecia and hormonal disorders
- Autoimmune diseases
- Feet and claw diseases
- Atopic dermatitis
- Chronic or recurrent otitis
- Skin tumours

## Ophthalmology

Referrals are taken by Veterinary Vision. They are a team of ophthalmologists that offer a comprehensive referral service for the North of England and South of Scotland. They are fully equipped with full microsurgical operating facilities for extraocular and intraocular surgery, including cataract extraction and intraocular laser surgery.

## Rehabilitation Services

### Physiotherapy

Physiotherapy is essential in the prevention, cure and rehabilitation of many conditions.

Following soft tissues injuries, trauma, surgery and for developmental and degenerative conditions, physiotherapy is used widely to accelerate the rehabilitation process. Physiotherapy aims to restore proper movement, strength and function, reduce pain, swelling, inflammation and accelerate the healing and rehabilitation process.

### Hydrotherapy

We use our underwater treadmill to rehabilitate a number of conditions in a safe, controlled and low impact environment. Our hydrotherapists are fully qualified and passionate about helping your patient on their rehab journey.





## 24 hour care 7 days a week

A team of emergency and critical care vets and highly qualified veterinary nurses provide round the clock care for your clients and their pets.



To arrange a referral call us on

**0191 3388890**

[referrals@moorviewvets.co.uk](mailto:referrals@moorviewvets.co.uk)

[www.moorviewvets.co.uk](http://www.moorviewvets.co.uk)



**Moorview Referrals**